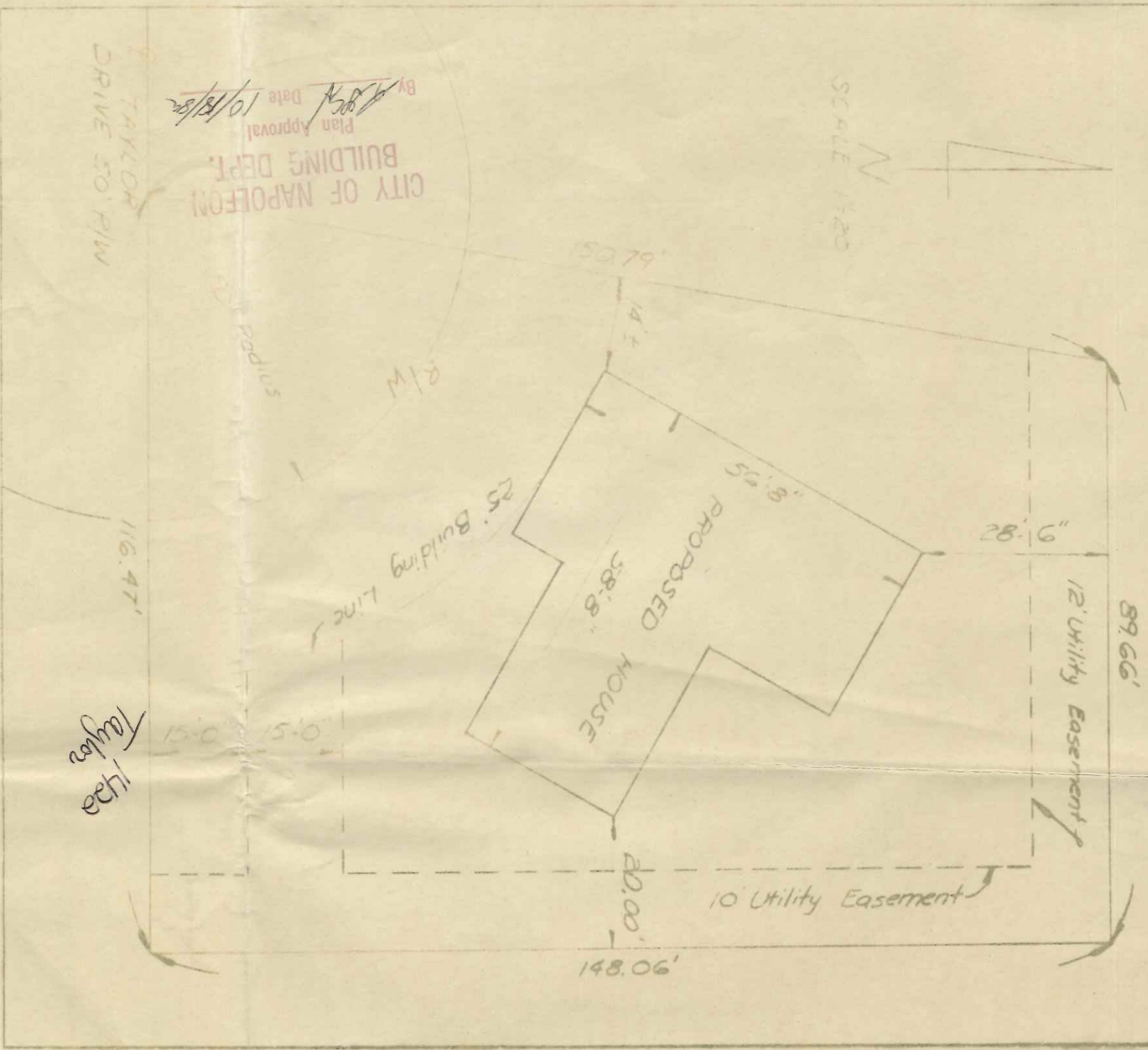
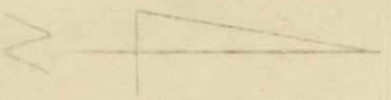


SITE PLAN FOR
 BECK'S CONSTRUCTION CO
 LOT #13 TAYLOR ADDITION
 CITY OF NAPOLEON OH.
 OCTOBER 15, 1982

SCALE 1/4" = 20'



CITY OF NAPOLEON
 BUILDING DEPT.
 Plan Approval
 By *[Signature]*
 Date 10/15/82

TAYLOR
 DRIVE 50' R/W

10' radius

R/W

25' Building Line

148.06'

14.7'

58.8'

20.00'

148.06'

28.92'

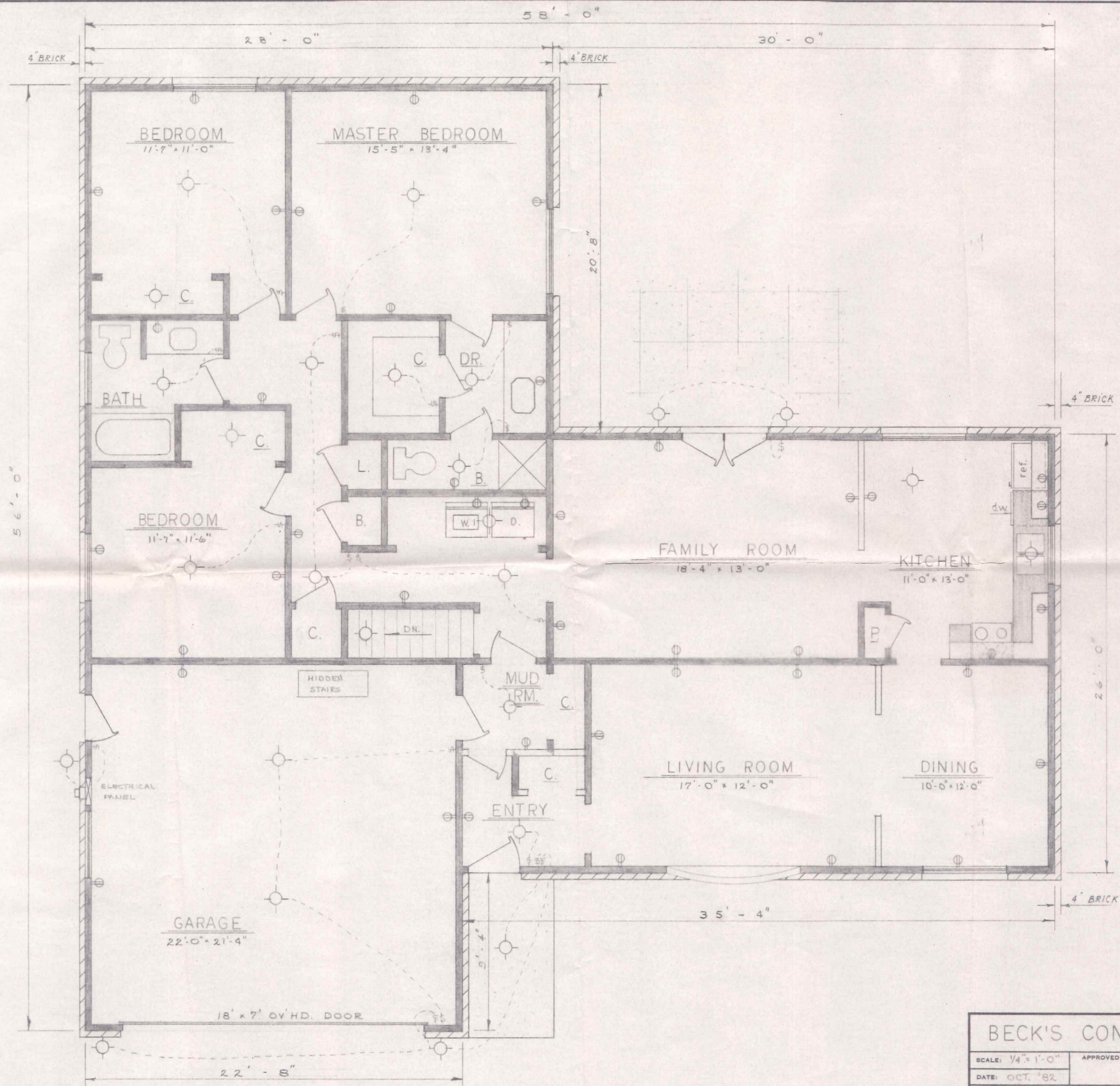
12' Utility Easement

89.66'

10' Utility Easement

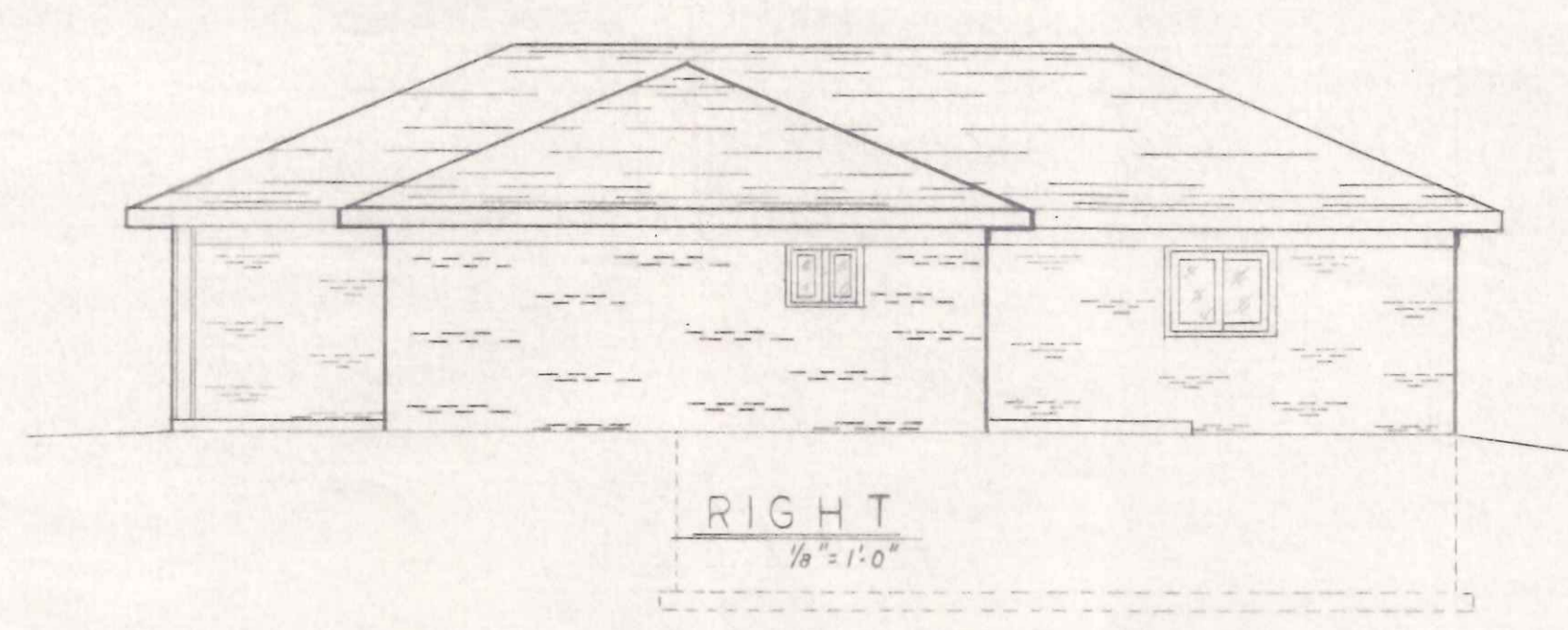
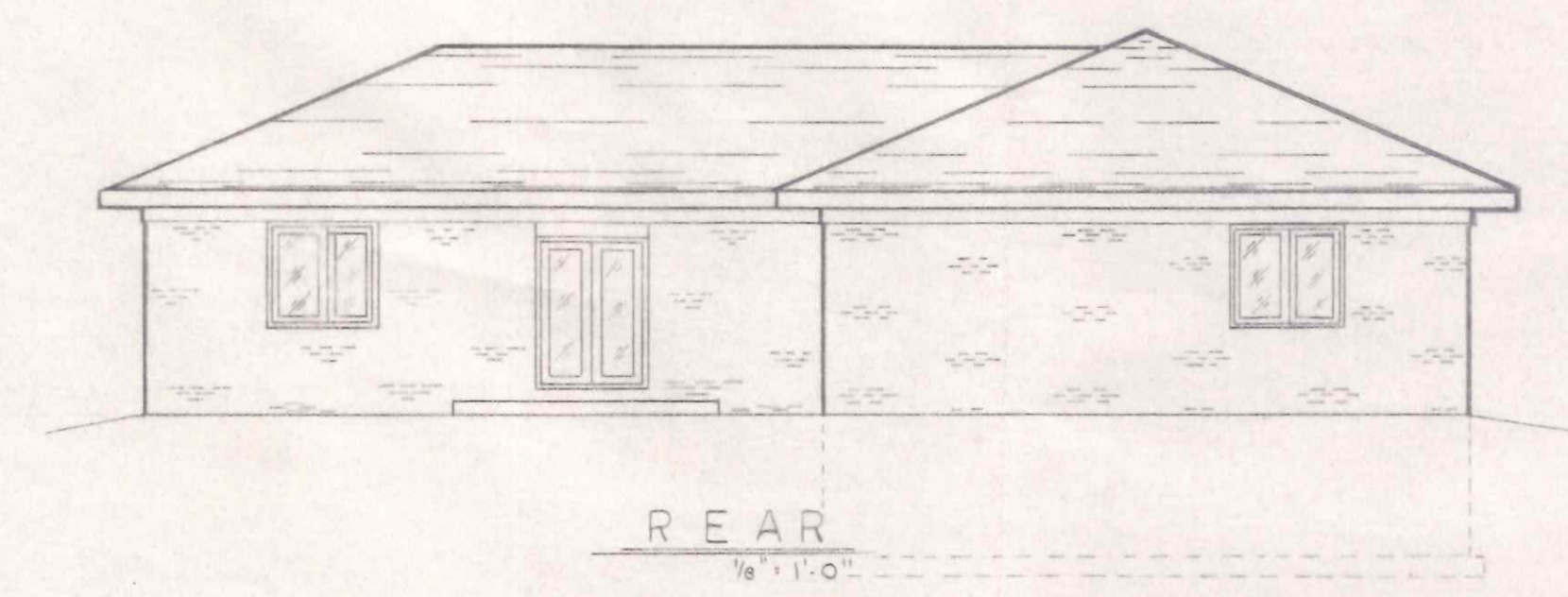
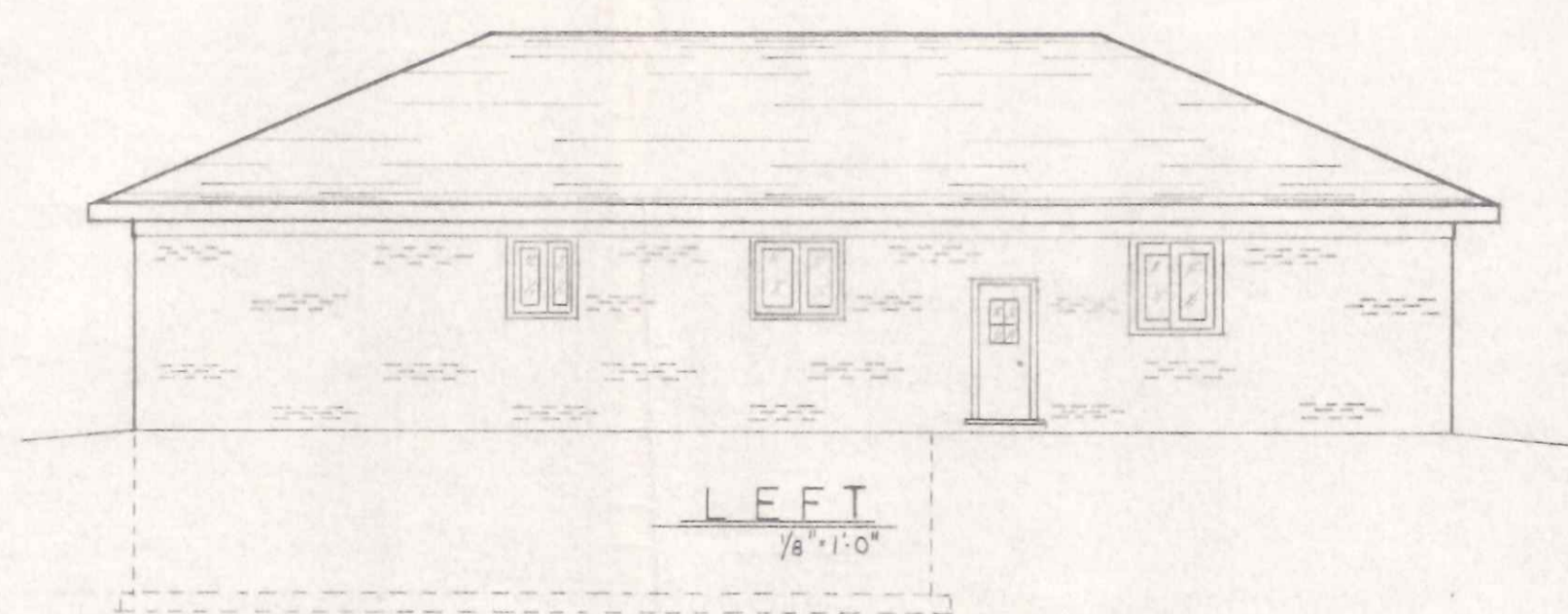
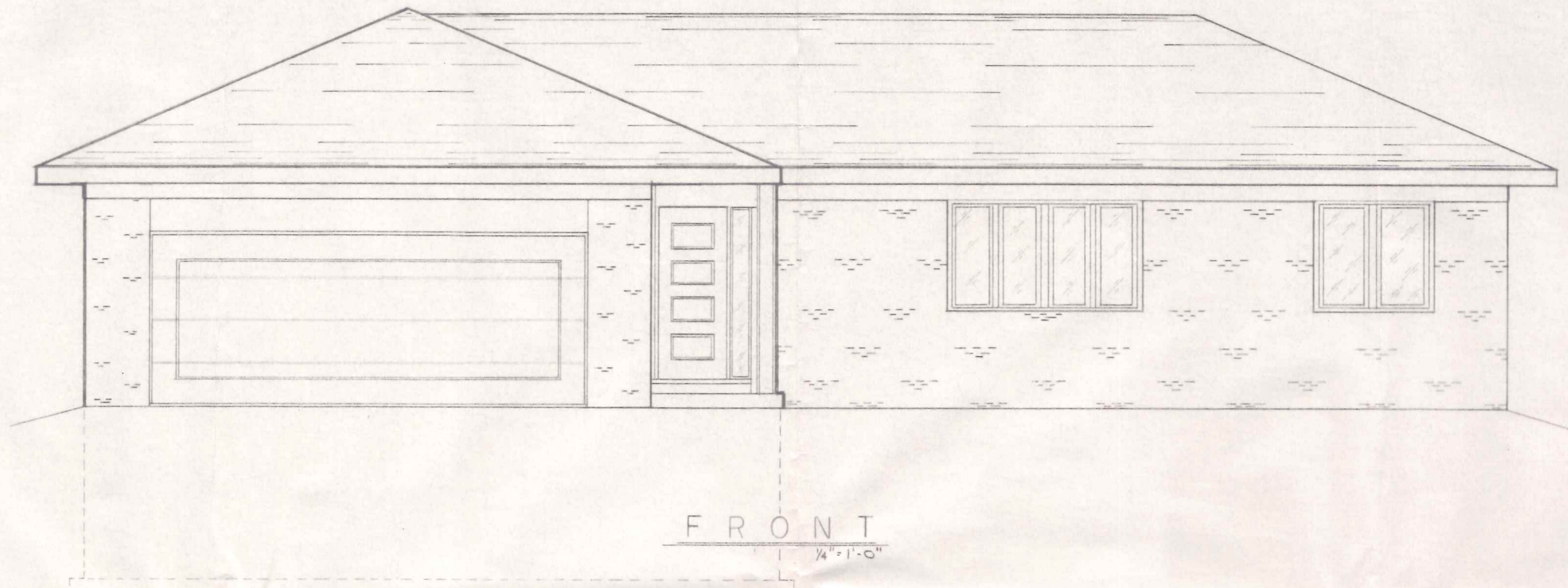
116.47'

Taylor
 142a

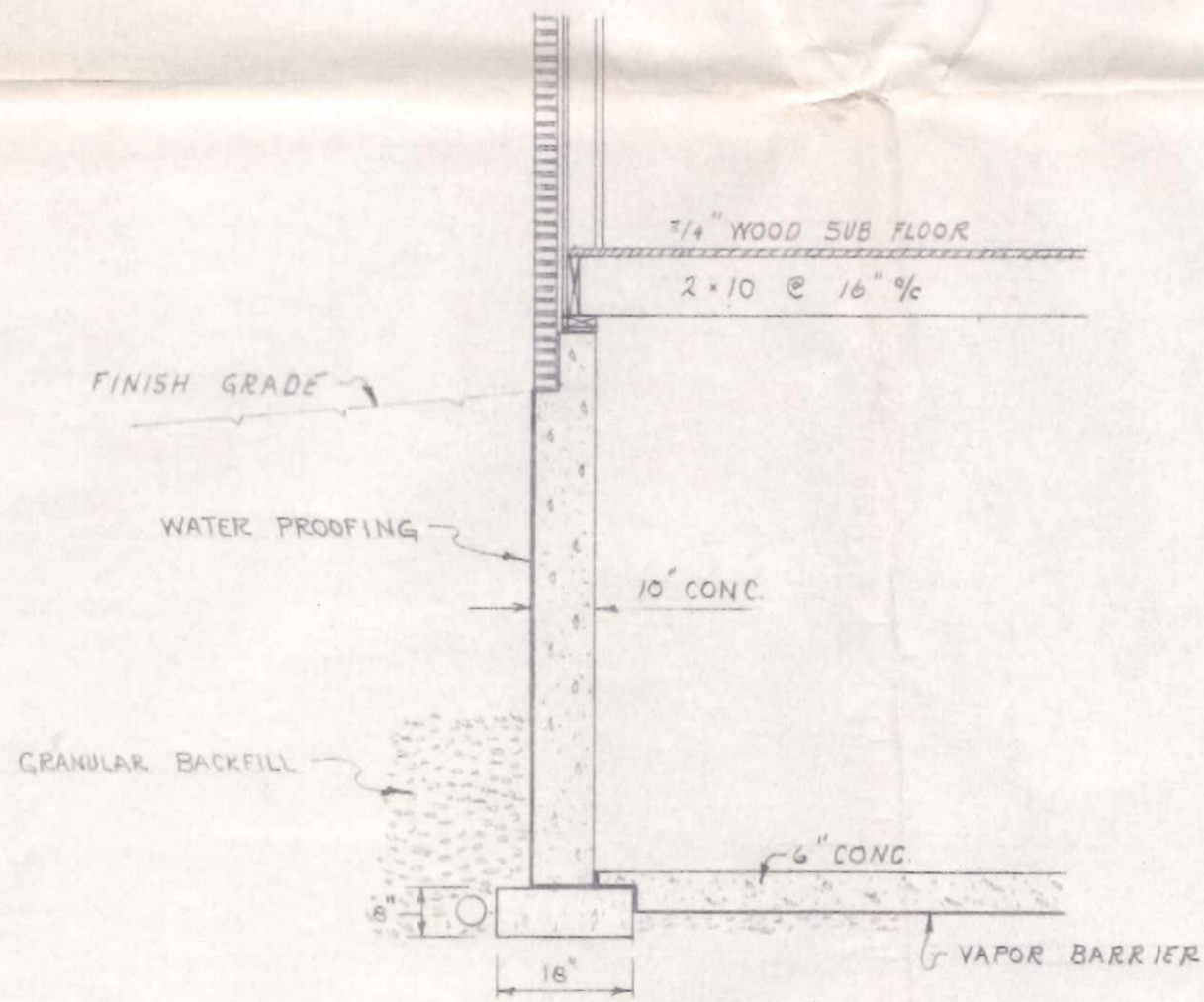
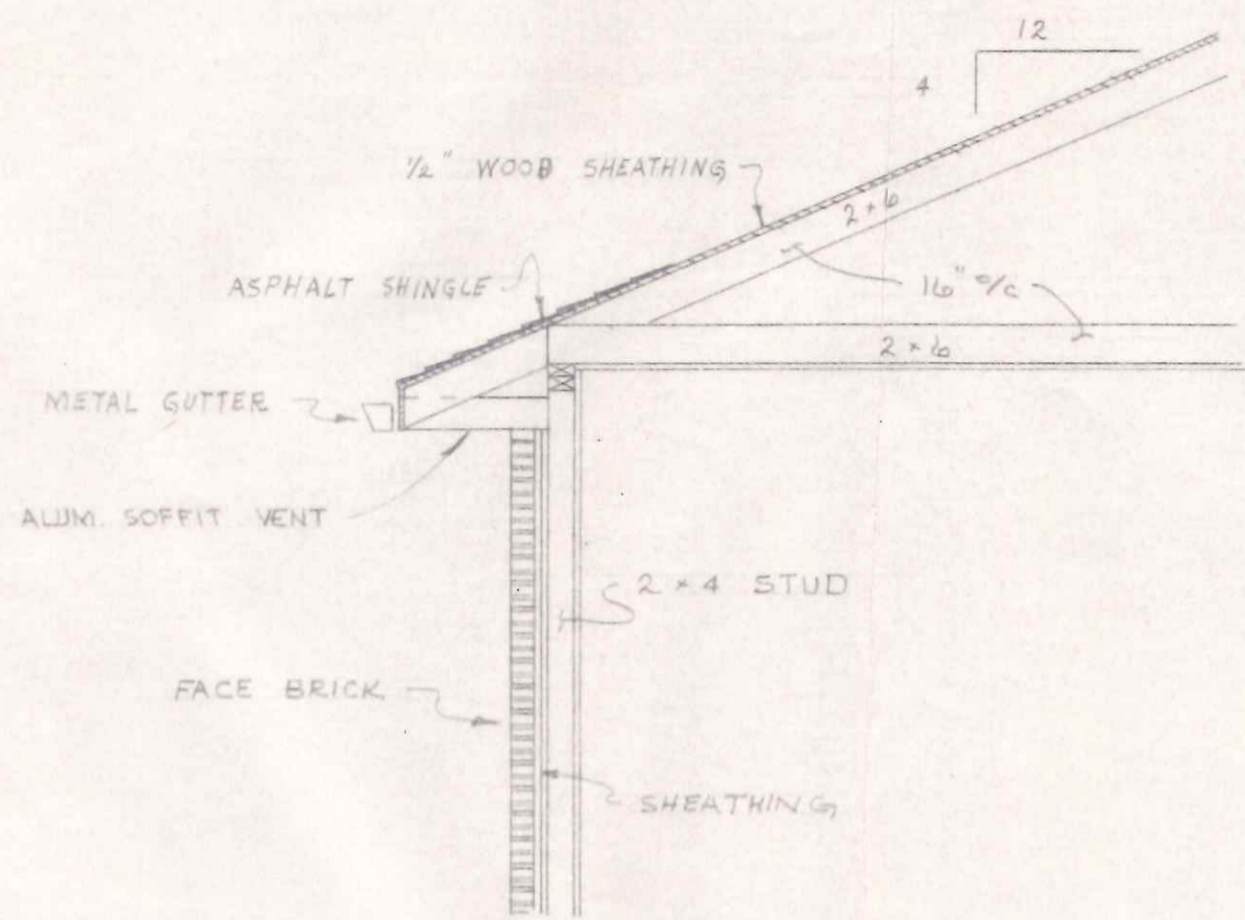


CITY OF NAPOLEON
 BUILDING DEPT.
 Plan Approval
 By *R.W.W.* Date *10/19/82*

BECK'S CONSTRUCTION CO.		
SCALE: 1/4" = 1'-0"	APPROVED BY:	DRAWN BY R.W.W.
DATE: OCT. '82		REVISED
FLOOR PLAN		
HOUSE PLAN NO. 132		DRAWING NUMBER 1 OF 3

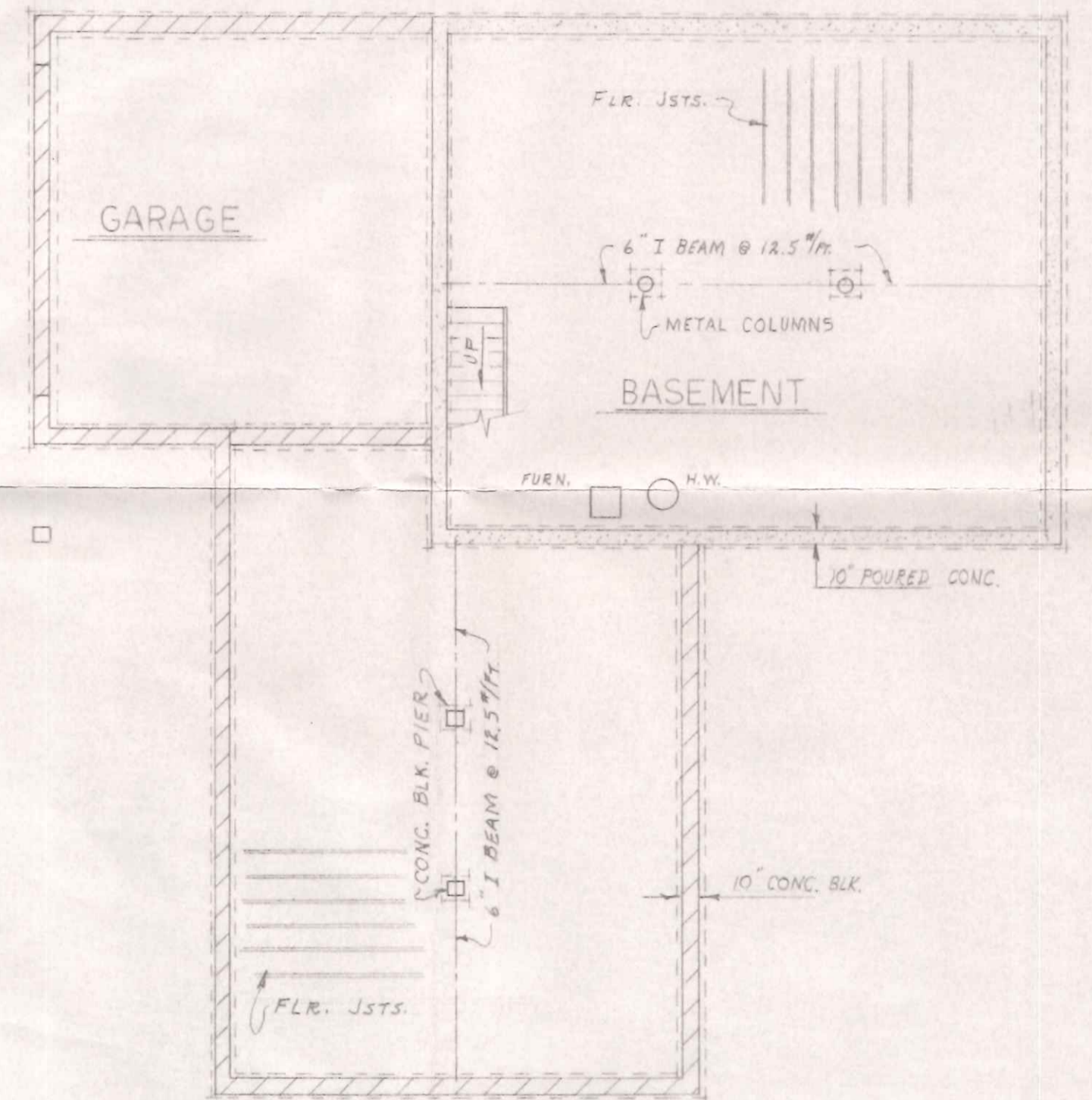


BECK'S CONSTRUCTION CO.		
SCALE: AS NOTED	APPROVED BY:	DRAWN BY R.Y.W.
DATE: OCT. '82		REVISED
ELEVATIONS		
HOUSE PLAN NO. 132		DRAWING NUMBER 2 OF 3



WALL DETAIL

3/8" = 1'-0"



FOUNDATION PLAN

1/8" = 1'-0"

BECK'S CONSTRUCTION CO.		
SCALE: AS NOTED	APPROVED BY:	DRAWN BY R.W.V.
DATE: OCT. '81		REVISED
WALL DETAIL & FOUNDATION PLAN		
HOUSE PLAN NO. 132	DRAWING NUMBER 3 OF 3	